



EKLINGJI SATVAM  
NEAR MARIGOLD CIRCLE, BESIDE SUNSOUTH WINDS, SOUTH BOPAL, AHMEDABAD - 380058.  
| [www.eclingjiprojects.com](http://www.eclingjiprojects.com)

RERA : PR/GJ/AHMEDABAD/AHMEDABAD CITY/Ahmedabad Municipal Corporation/  
MAA12800/190124/311229 | [WWW.GUJRERA.GUJARAT.GOV.IN](http://WWW.GUJRERA.GUJARAT.GOV.IN)

10.11.2013 09:41:11 PM > PROS112845



EKLINGJI  
SATVAM



# AN EVERLASTING JOURNEY OF ELEGANCY

We crafted a luxurious lifestyle in the prominent location of Sanand, where our exclusive 3 BHK residential enclave beckons you to experience the pinnacle of comfort and style. With us, experience a life full of opulence and convenience, which elevates and takes your lifestyle to new heights of elegance.





# AN EXPRESSION OF THE BEAUTY

An expression of beauty that is defined by a detailed design and timeless charm. Elevate your experience with us to unlock a world of extraordinary privileges.

# DESIGNED WITH A TOUCH OF DETAILING

A masterpiece of architectural ingenuity and modern design, it is a testament to innovation and functionality. From the moment you step through the grand entrance, you'll experience a harmonious fusion of contemporary aesthetics and state-of-the-art engineering.





# A UNIQUE SENSORY FOR FUN



MINI GYM



CLUB HOUSE



INDOOR SWIMMING POOL



CHILDREN PLAY AREA



JOGGING TRACK



TEMPLE



INDOOR GAMES



INFORMAL SITOUT



LANDSCAPE GARDEN



SENIOR CITIZEN AREA



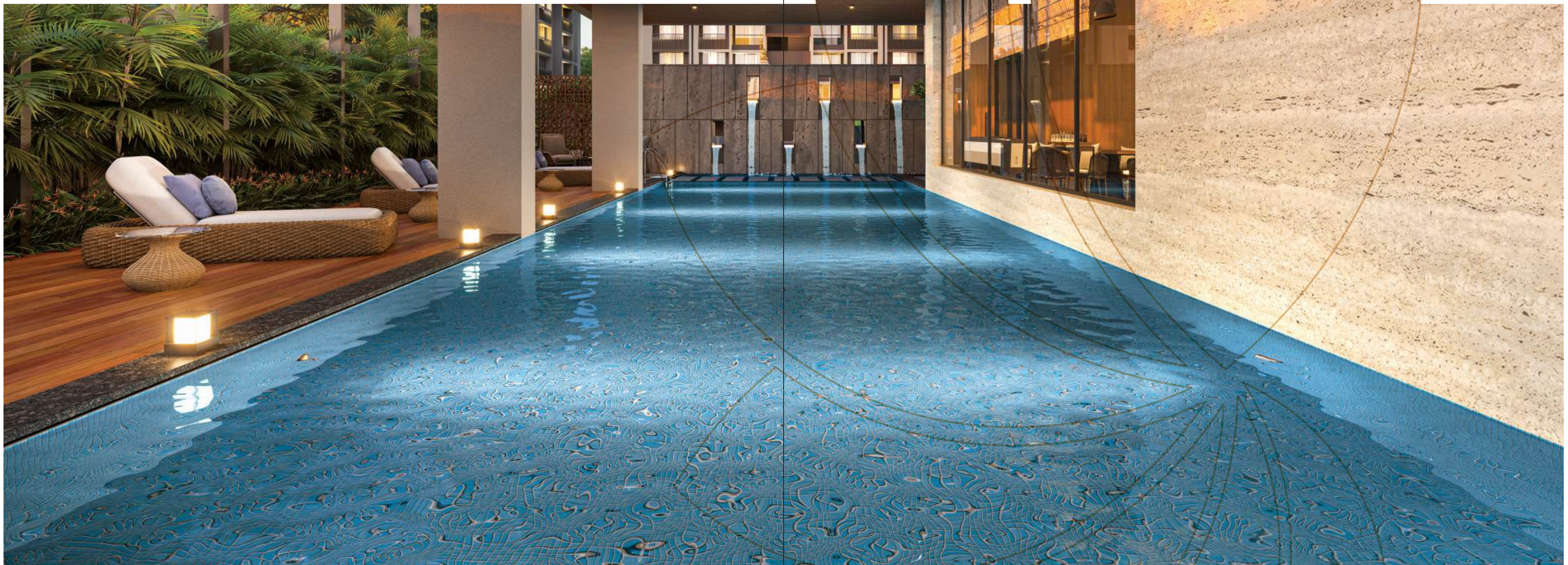
CRECHE

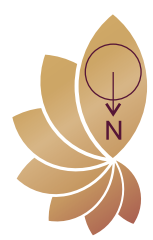


CCTV CAMERA



THE  
CHARMING  
VISTA OF  
COOLNESS





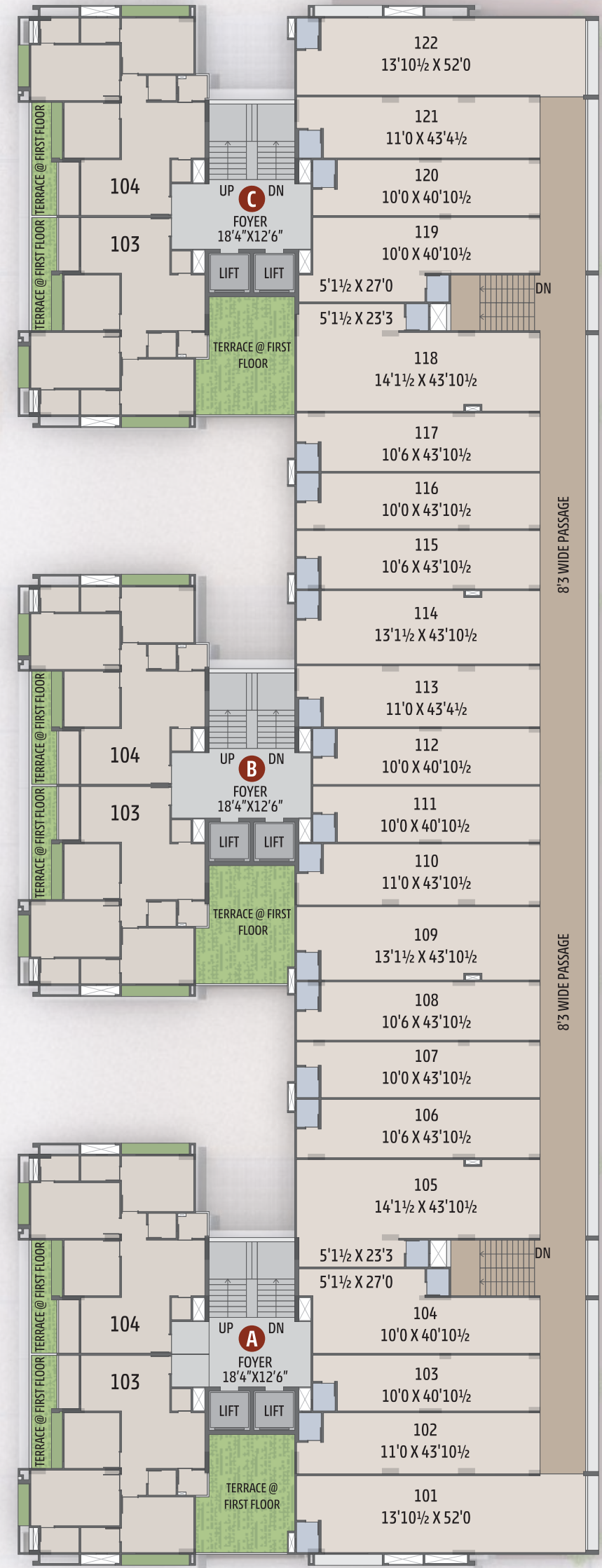
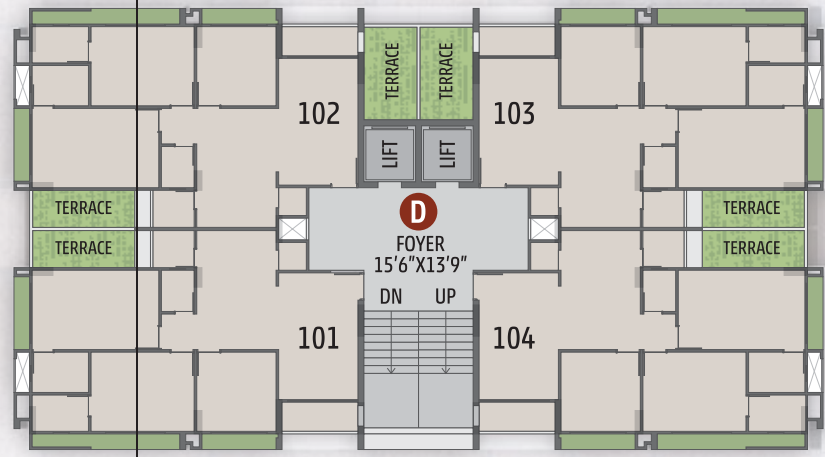
GROUND FLOOR

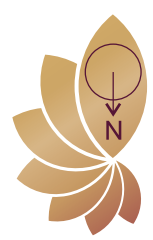


24 MT WIDE ROAD



FIRST FLOOR





TYPICAL FLOOR

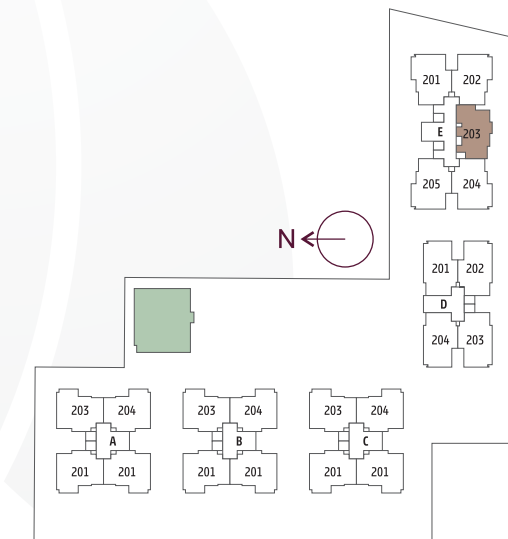
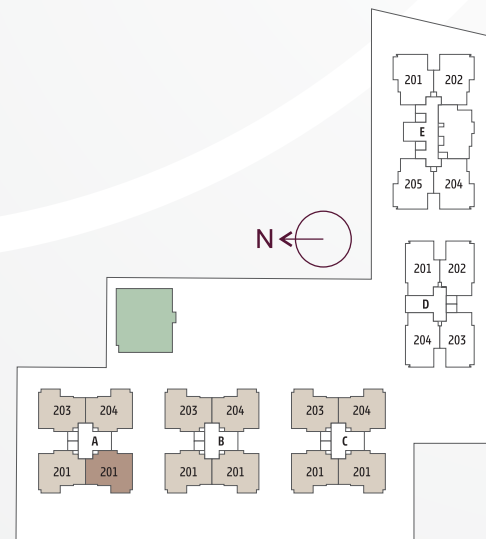




3 BHK  
BLOCK A-B-C



3 BHK  
BLOCK E





# DESTINATION THAT CREATE URBAN SENSATION

MARIGOLD

SHALIGRAM  
PRIME

SUN SOUTHWINDS

MARIGOLD  
CIRCLE

 EKLINGJI  
SATVAM



# THE CROWING GLORY OF AN INNOVATION



LOCATION QR



WEBSITE QR

DISCLAIMER • This brochure and model are not part of any legal documents. • All dimensions / measurement given are unfinished and approximates. • The photographs & artistic impressions are for references only. Actual building may vary from the representations mentioned in the brochure. • This is not an advertisement within the meaning of RERA. This is not an offer, invitation or commitment of any nature. Recipients are advised to appraise themselves of the necessary and relevant information of the project prior to making any purchase decisions. All the specifications of the flat and project including but not limited to amenities, common areas, any other facilities shall be as per the terms and conditions of the final agreement for sale between the parties. • Subject to Ahmedabad jurisdiction only. • T&C Applicable\*





Ground floor retail strip featuring various brands and stores:

- Magick
- Colorlab
- Magica
- A'LEORL
- Styler's
- LEADHEL
- SkyBags
- Fashion Hub
- Green Fiber
- Colorlab
- Magica
- A'LEORL
- Styler's
- LEADHEL
- SkyBags
- Fashion Hub
- Green Fiber
- Colorlab
- Magica
- A'LEORL
- Styler's
- LEADHEL
- SkyBags
- Fashion Hub
- Green Fiber

REKINDLI  
SATYAM



Magica Colorlab leaders LEACHEL SkyBags Fashaion Hub Green fiber Styler's A'LEORE Magica Colorlab leaders LEACHEL SkyBags Fashaion Hub Green fiber LEACHEL SkyBags Colorlab Magica A'LEORE Styler's LEACHEL SkyBags Fashaion Hub Green fiber LEACHEL SkyBags Fashaion Hub Green fiber LEACHEL SkyBags Fashaion Hub Green fiber LEACHEL SkyBags Fashaion Hub Green fiber





Magica

A'LEORL

Styler's

SkyBags

Fashaion Hub

Green Fiber

KLENGJI  
SATVAM

















# Eklingji Satvam

## **Eklingji Projects LLP**

D-005, G.F. Elenza Crest, Sindhu  
Bhavan Road, Nr. Sigma Corporate,  
Bodakdev, Ahmedabad, Gujarat -  
380058.

Contact No. :- +91

## **Project :- Eklingji Satvam**

Site Address :- Eklingji Satvam,  
C.N. No/CTS No./Survey no. 736/1,  
C.S.NO. 432 , Final Plot no. 191/1 ,  
West of Division Ghuma, Daskroi,  
Ahmedabad, Gujarat - 380058.

**RERA Registration No.** \_\_\_\_\_

**<https://gujrera.gujarat.gov.in/>**

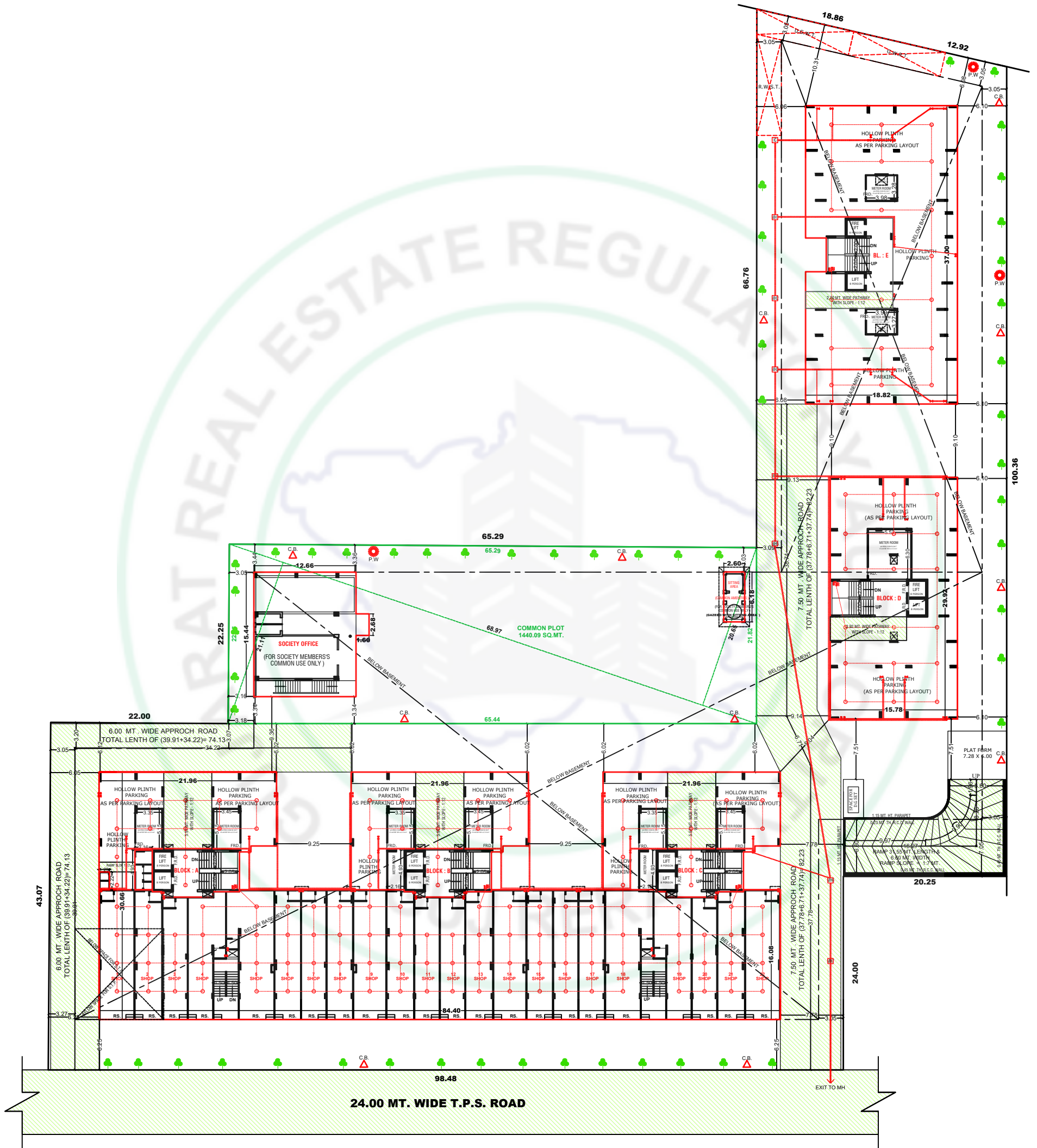
# Images for Representative Purposes Only



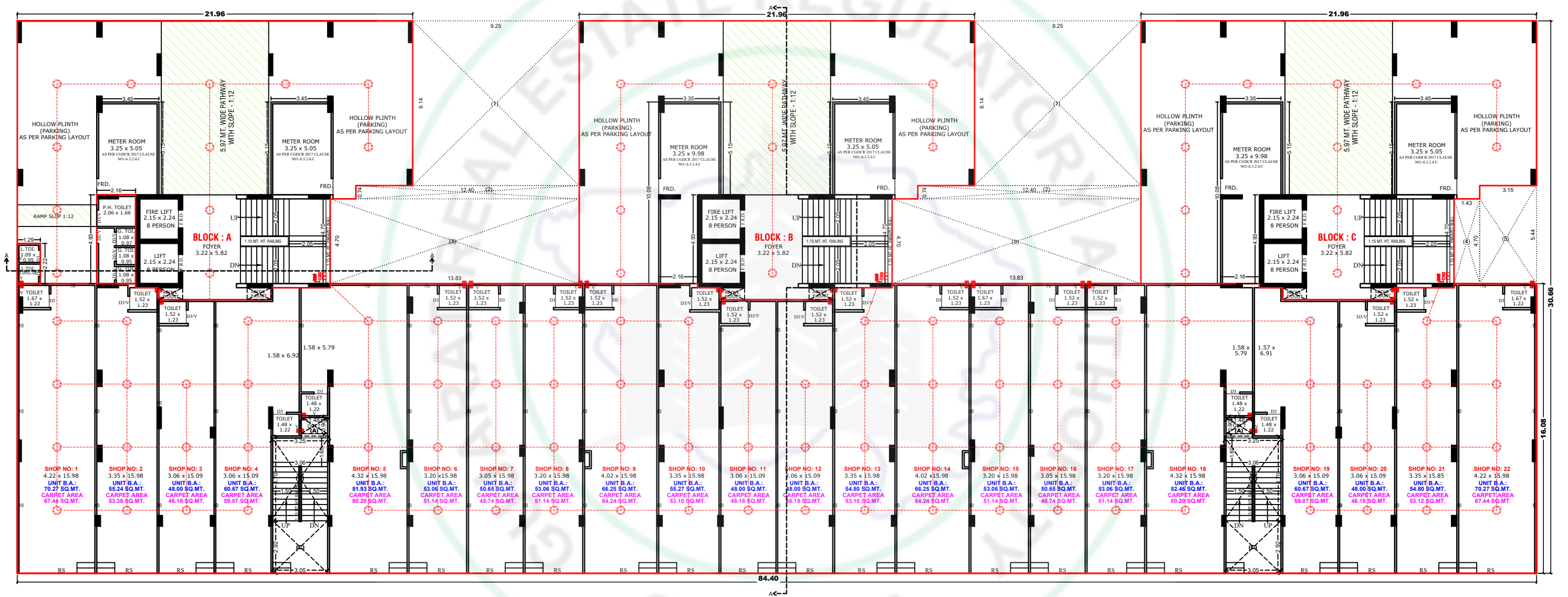
# Images for Representative Purposes Only



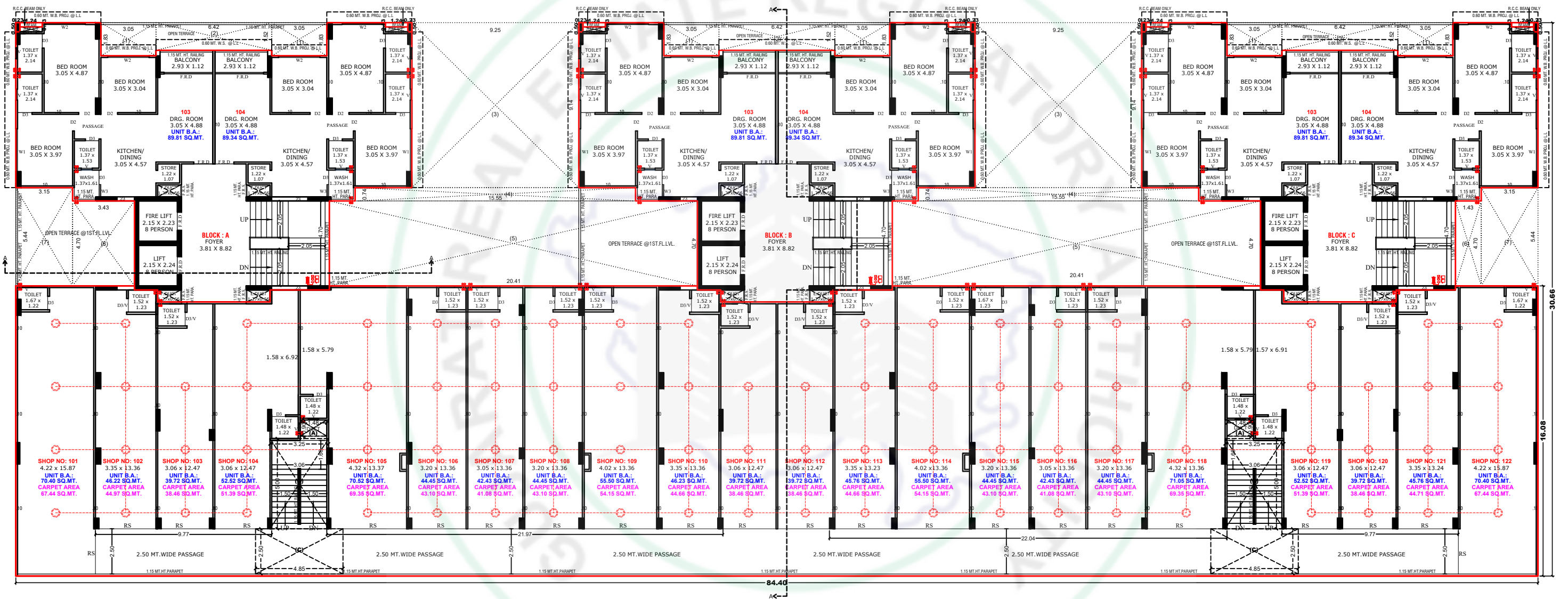




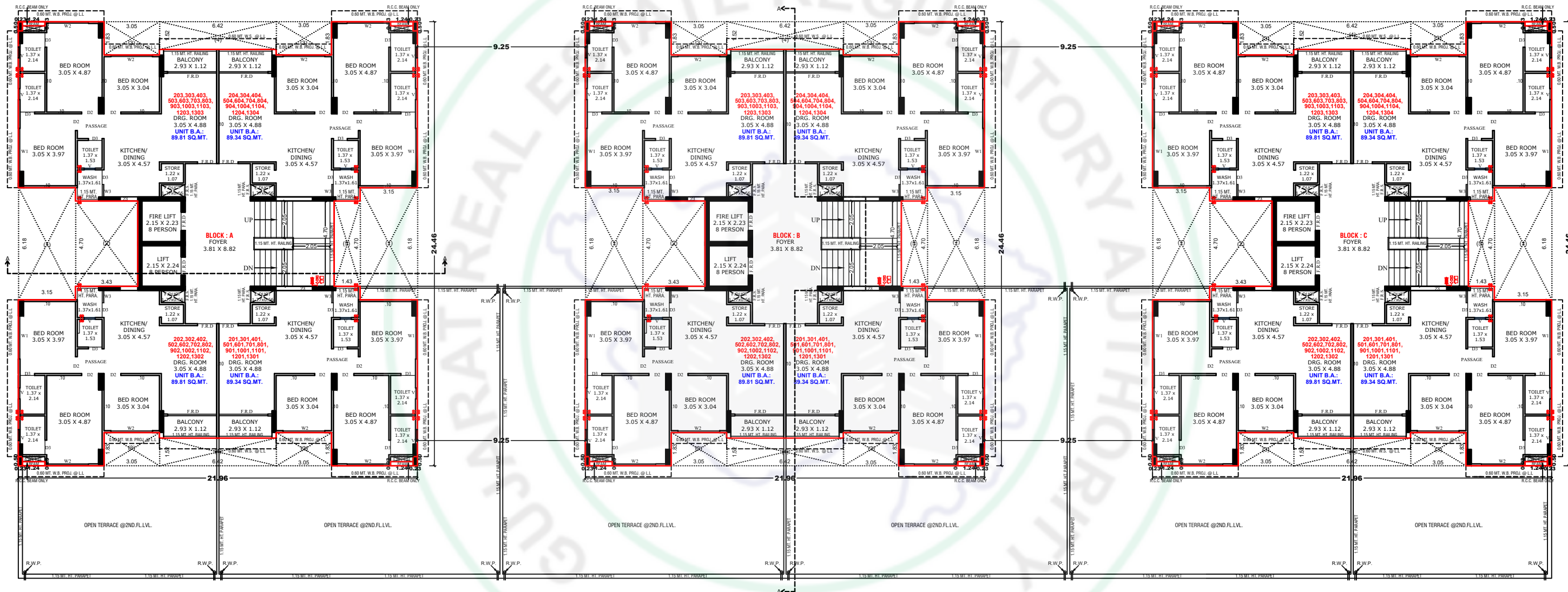
**LAYOUT PLAN**



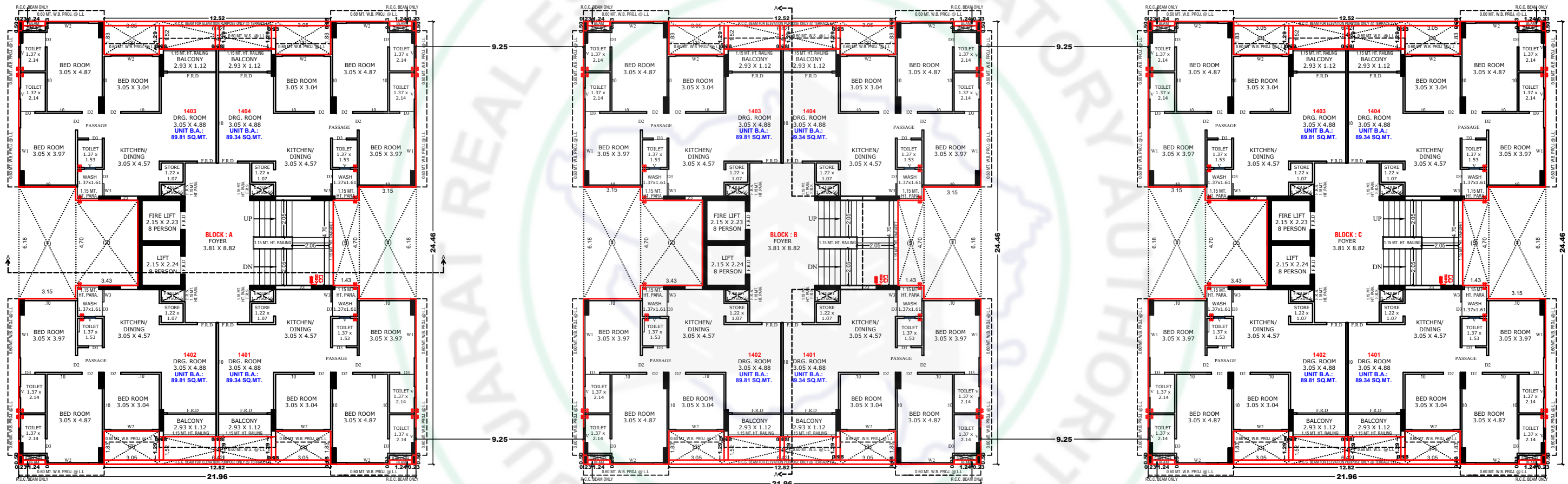
GUJ RERA



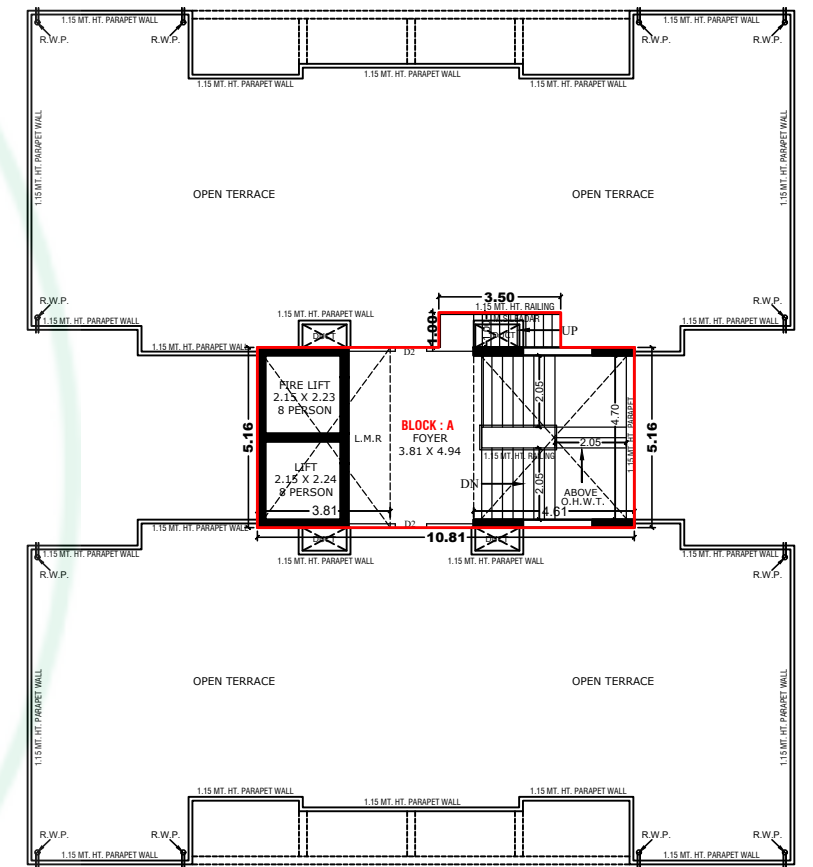
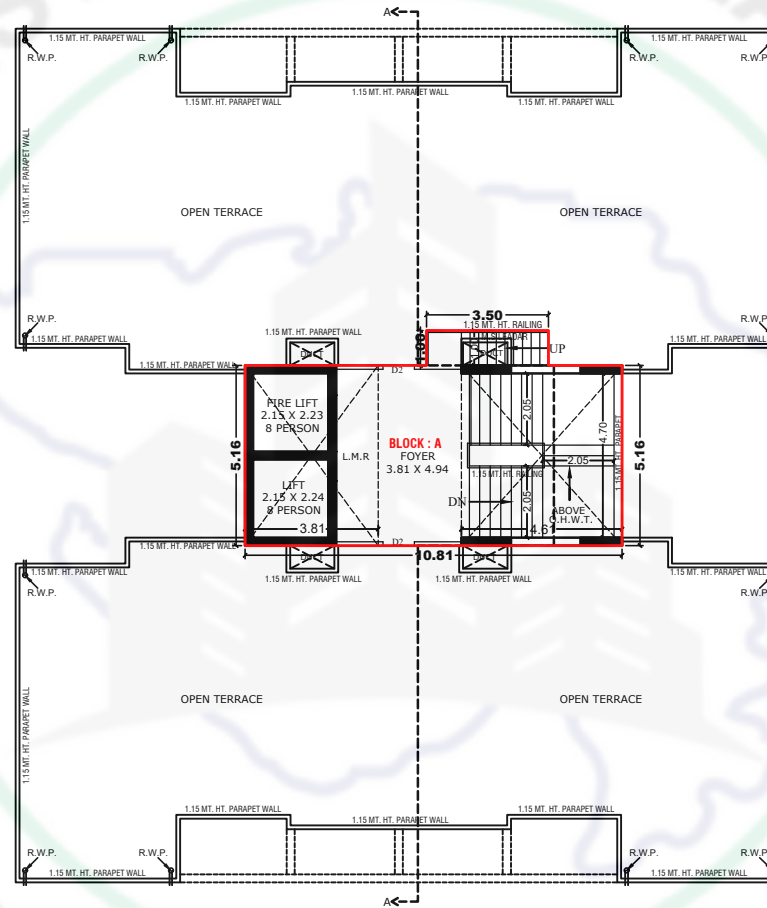
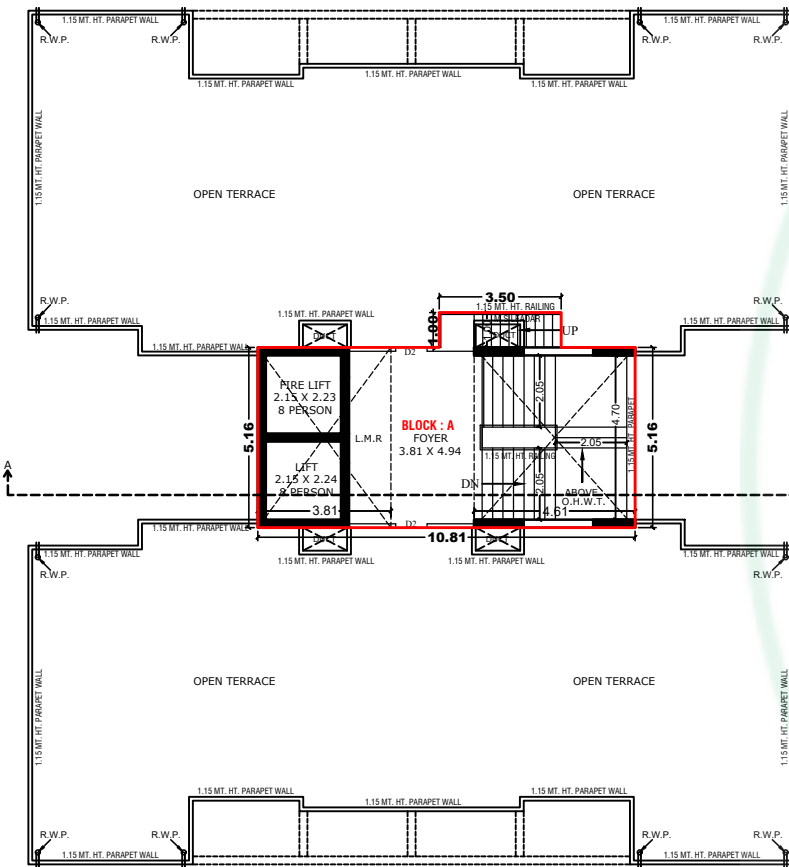
**1ST. FLOOR PLAN (BLOCK - A+B+C)**



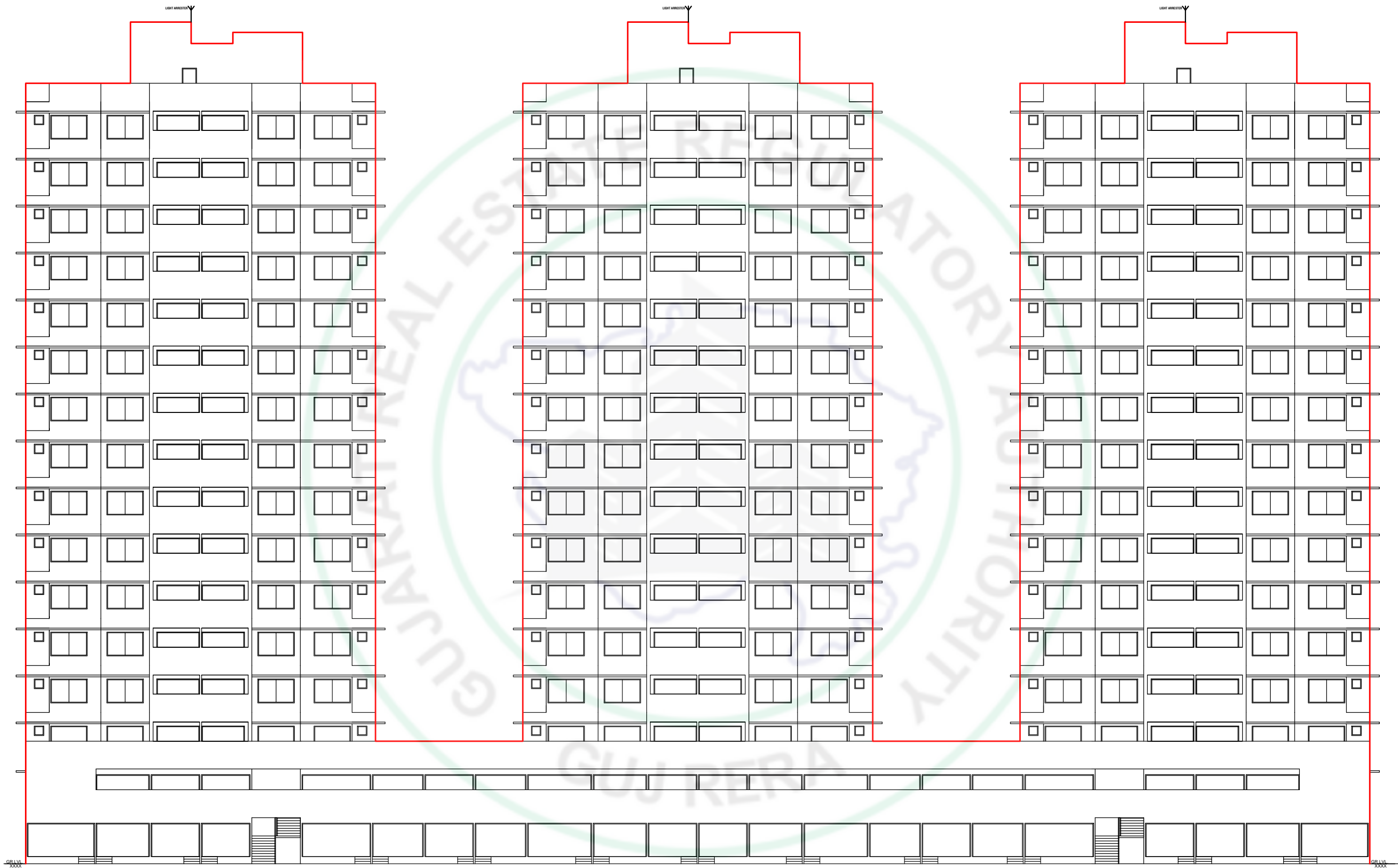
**2ND. TO 13TH. FLOOR PLAN (BLOCK - A+B+C)**



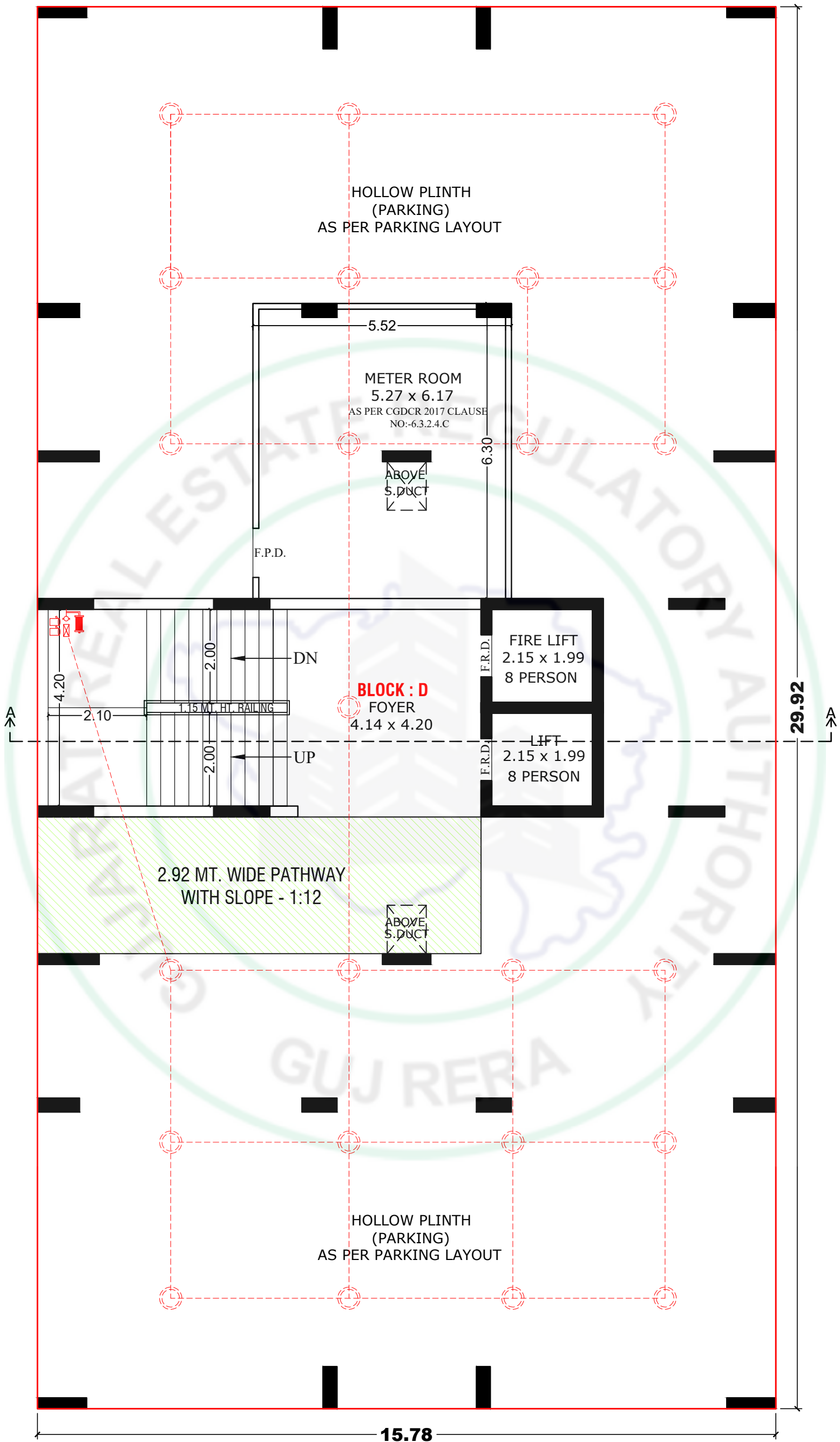
**14TH. FLOOR PLAN (BLOCK - A+B+C)**



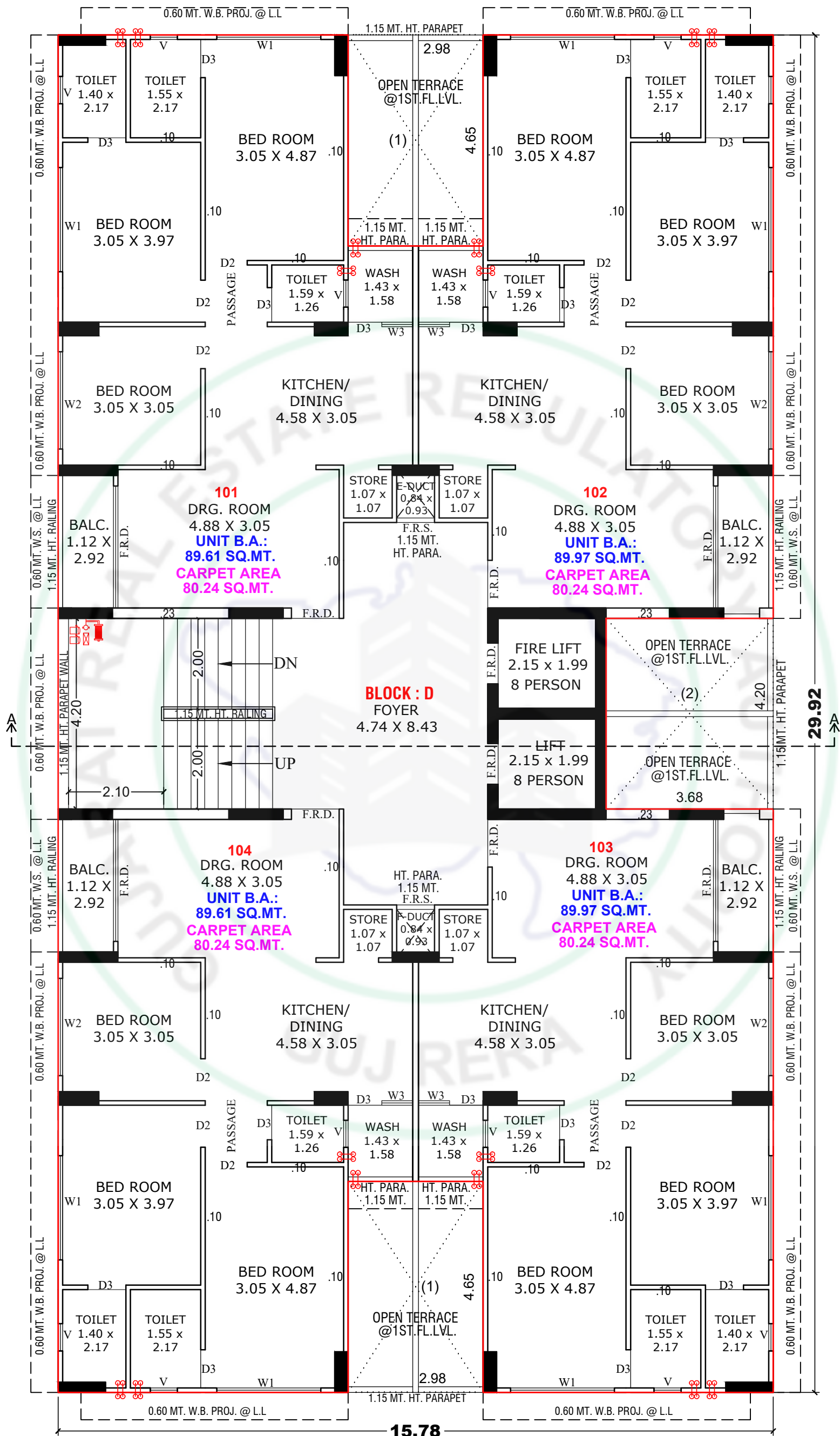
**STAIR CABIN , L.M.R. & OPEN TERRACE PLAN (BLOCK - A+B+C)**



**ELEVATION (BLOCK - A+B+C)**



**GROUND FLOOR PLAN (BLOCK - D)**

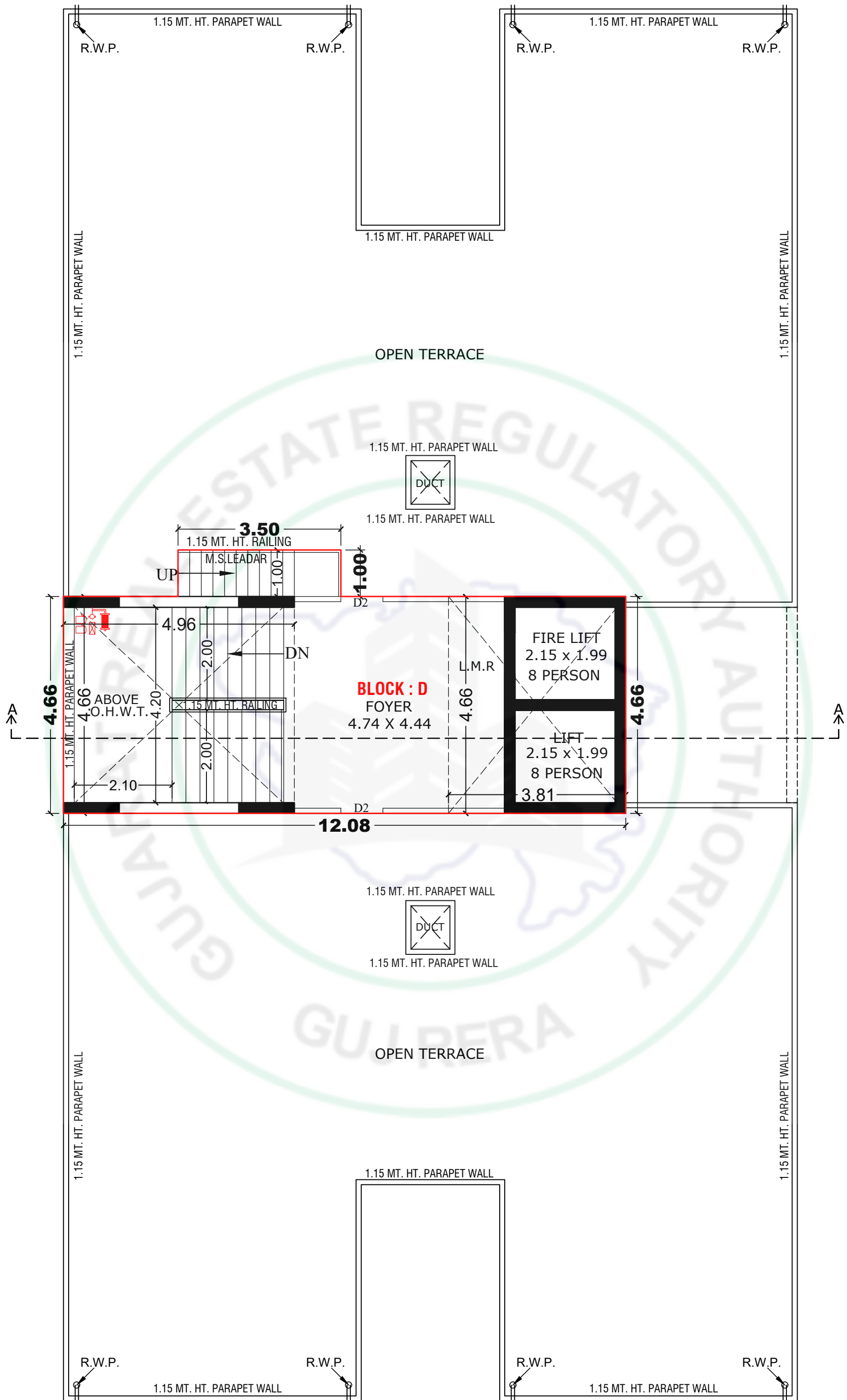


**1ST. FLOOR PLAN (BLOCK - D)**

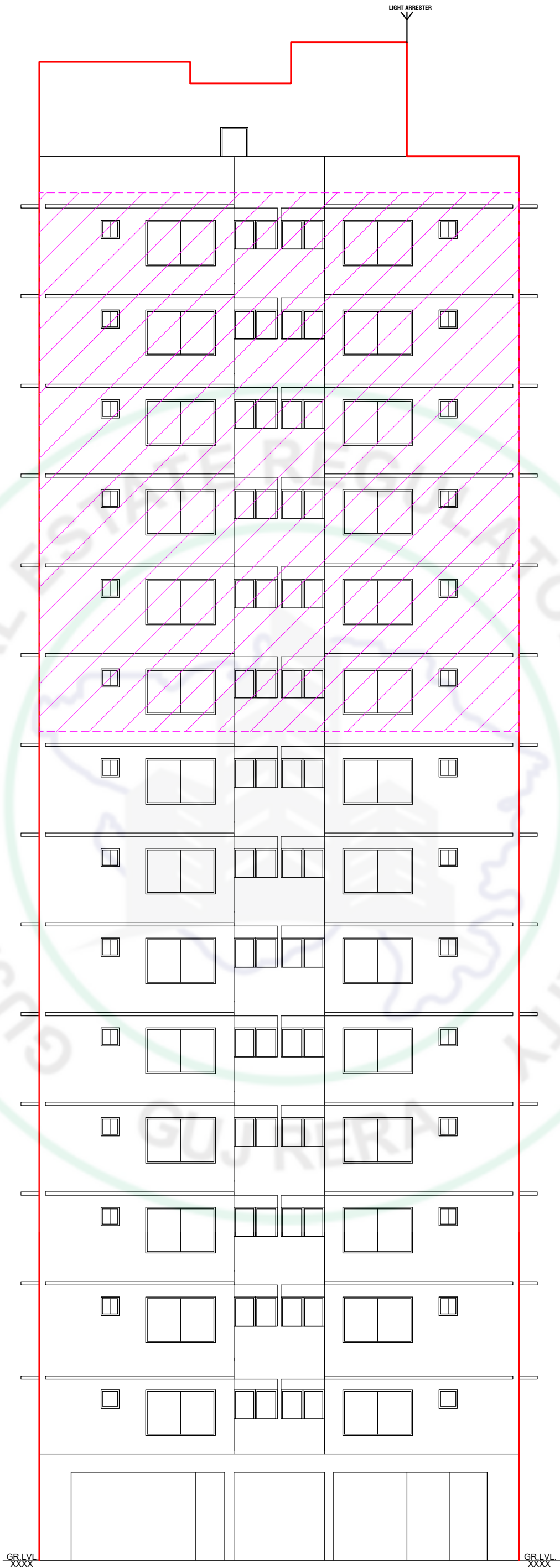




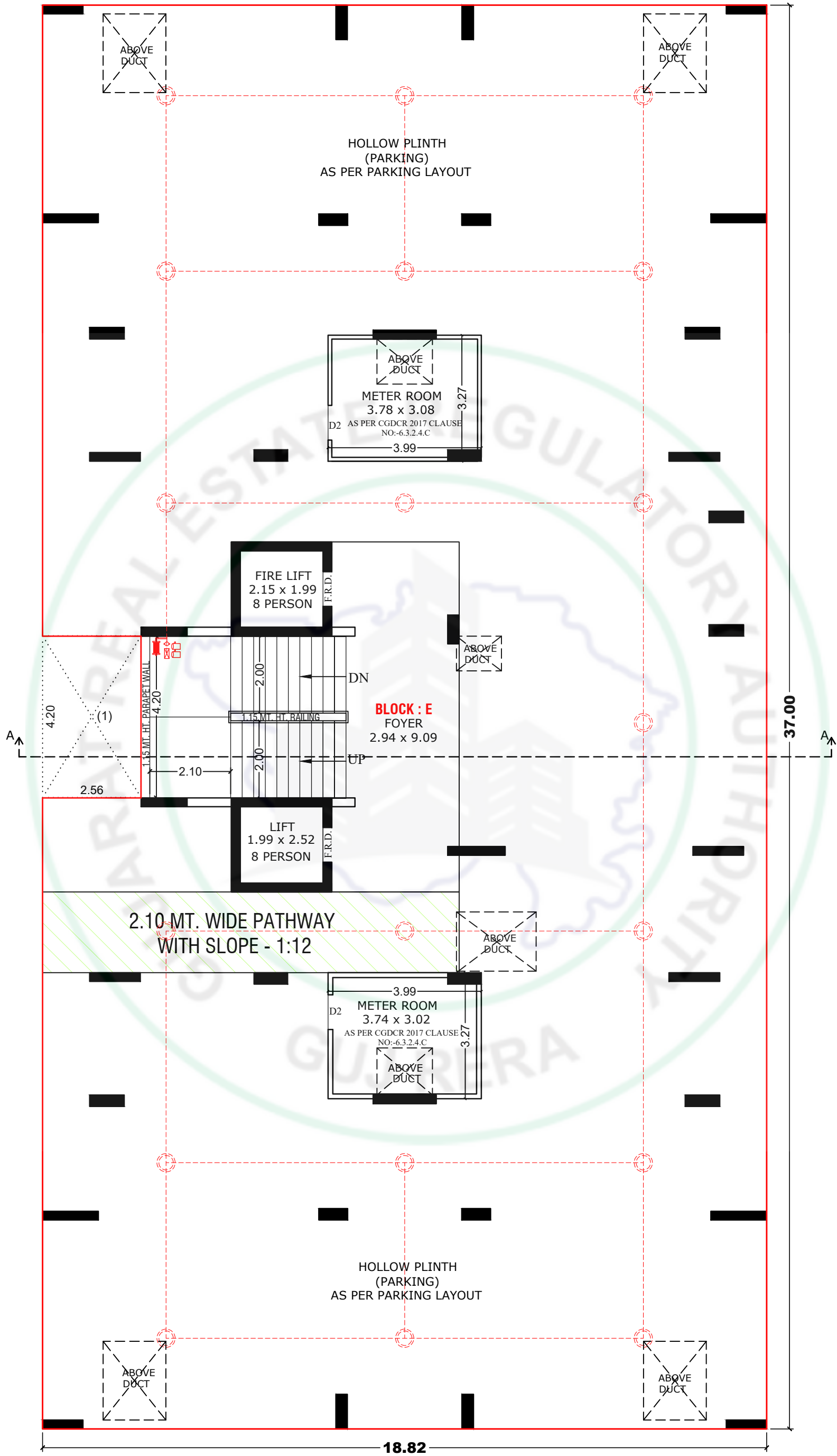




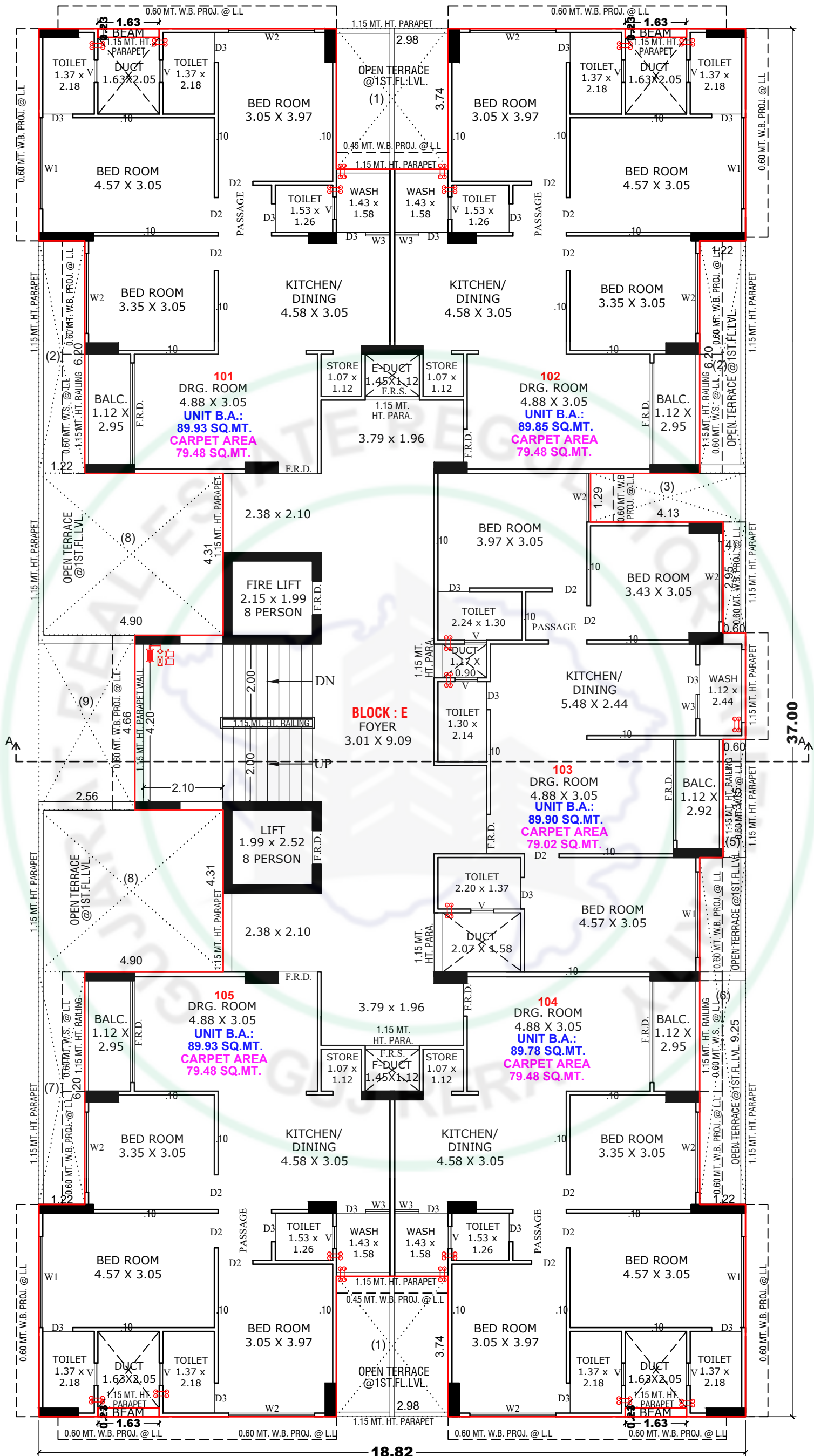
**STAIR CABIN , L.M.R. & OPEN TERRACE PLAN (BLOCK - D)**



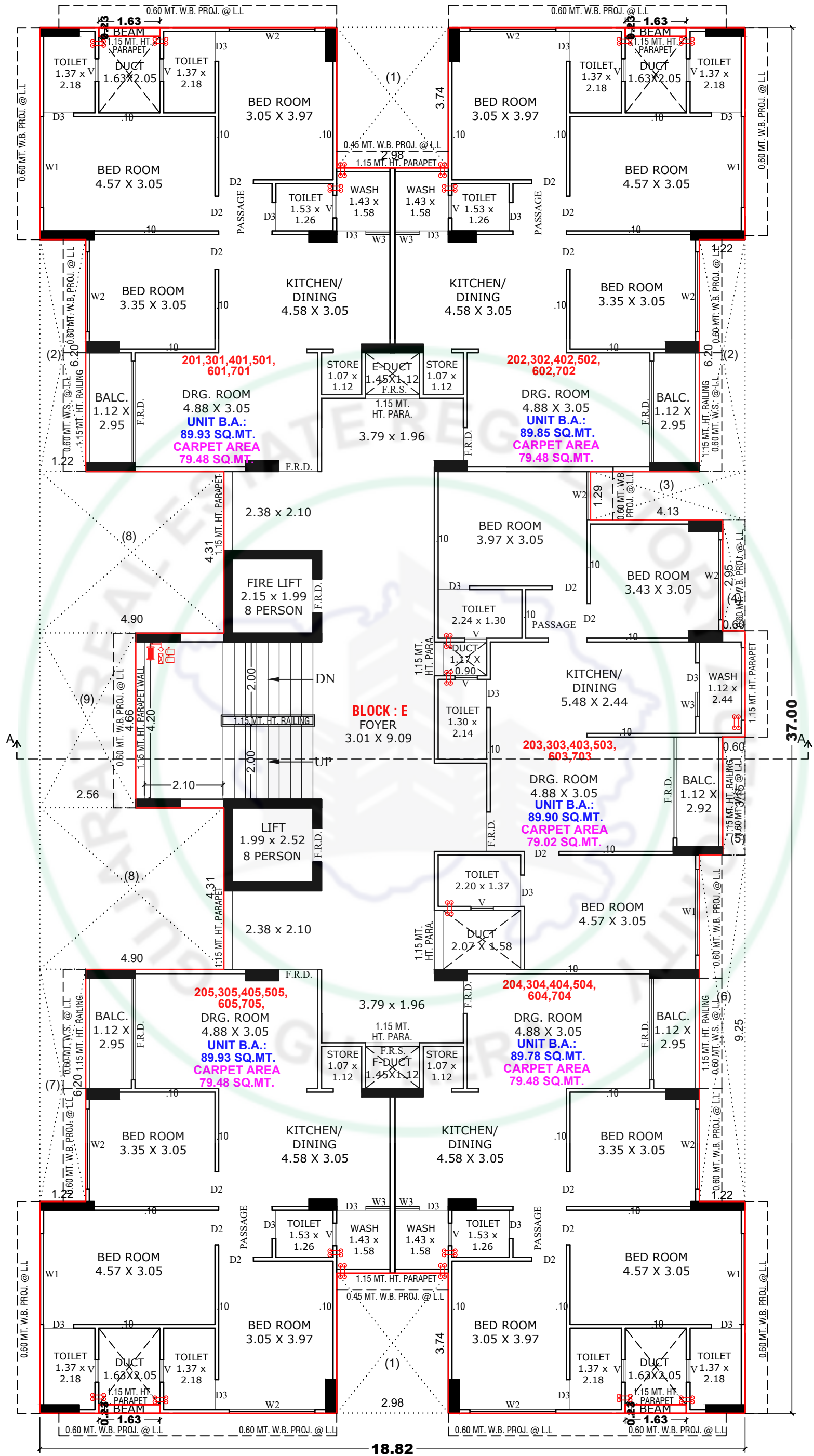
**ELEVATION (BLOCK - D)**



**GROUND FLOOR PLAN (BLOCK - E)**

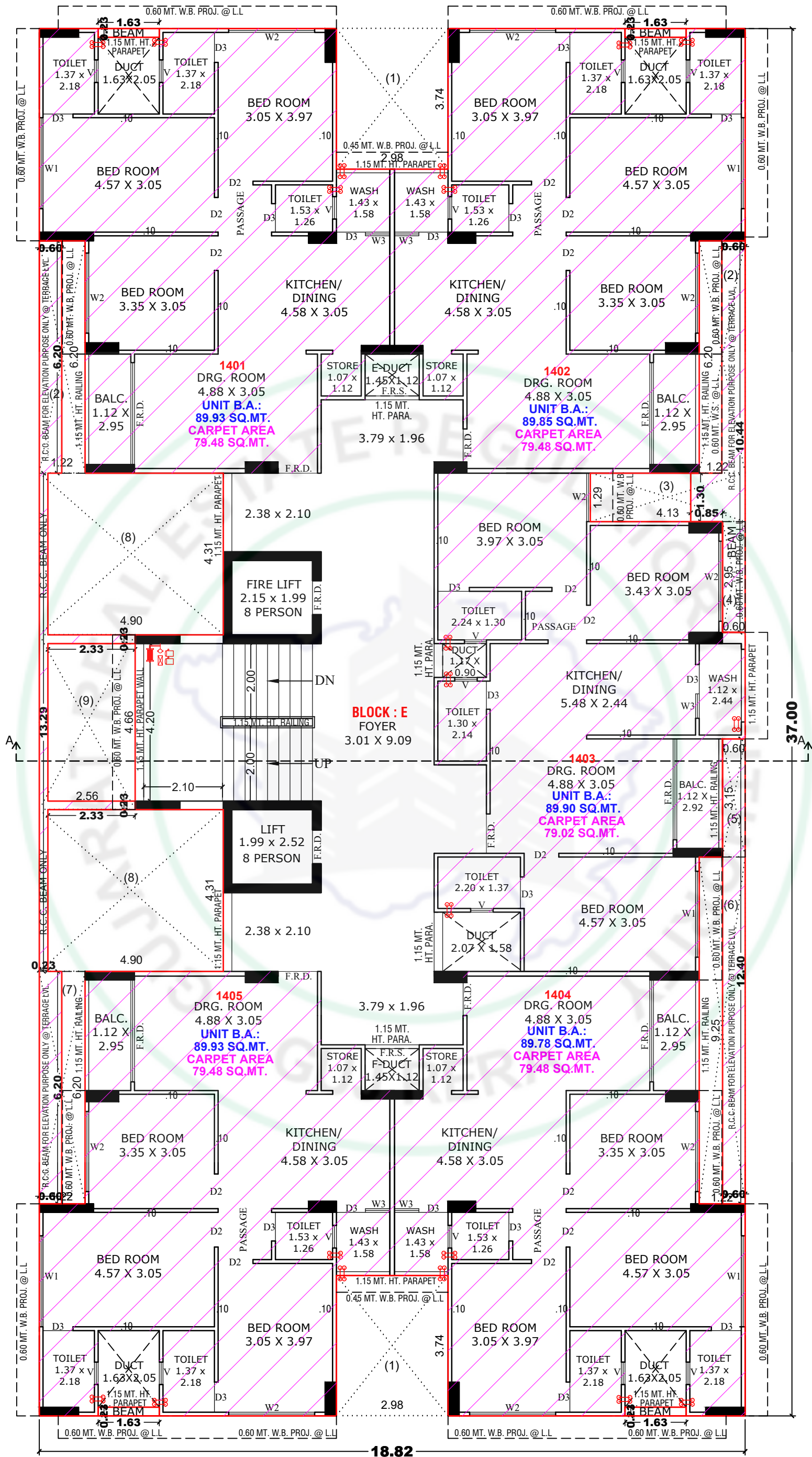


# 1ST. FLOOR PLAN (BLOCK - E)

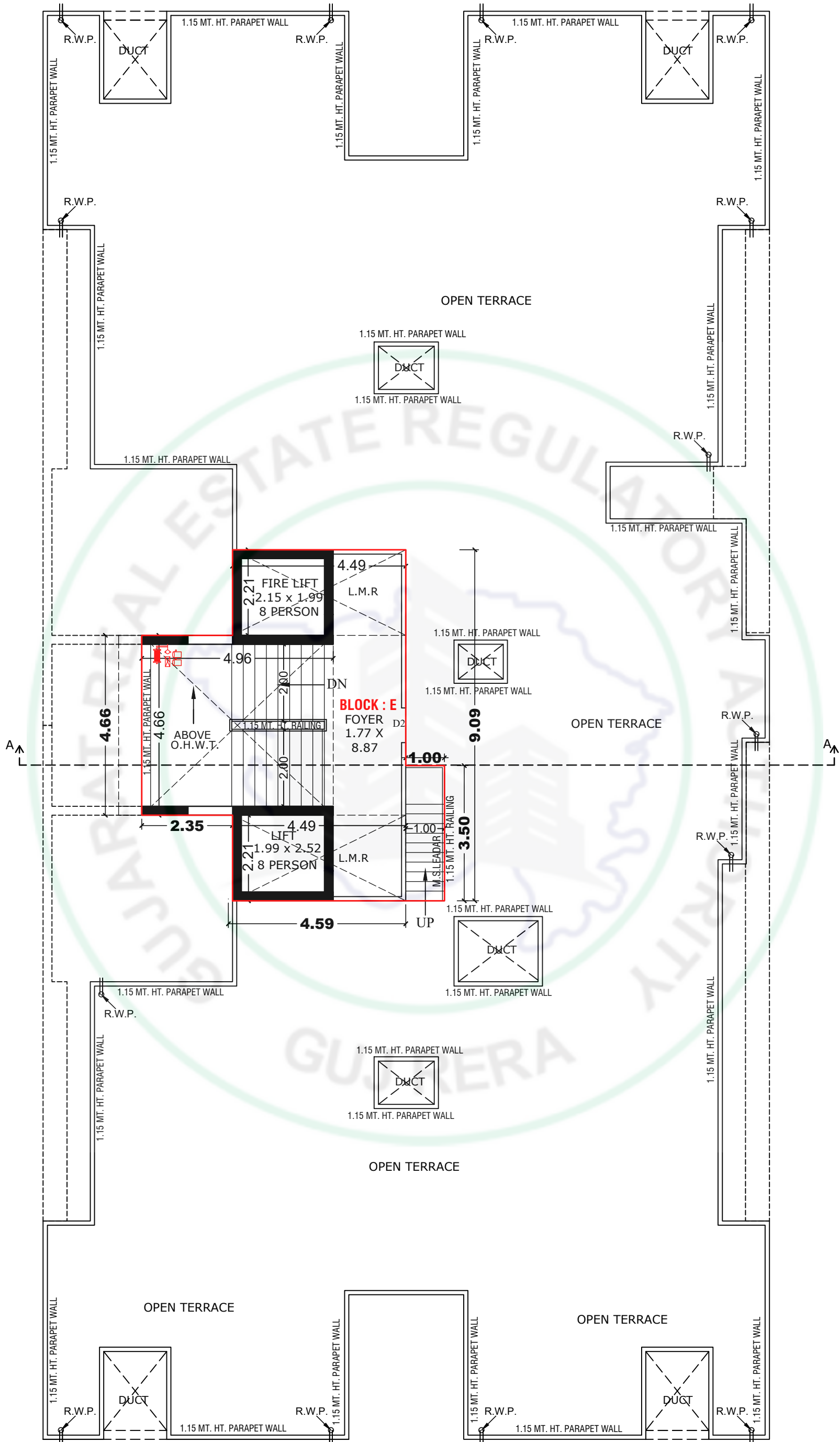


**2ND TO 7TH FLOOR PLAN (BLOCK - E)**

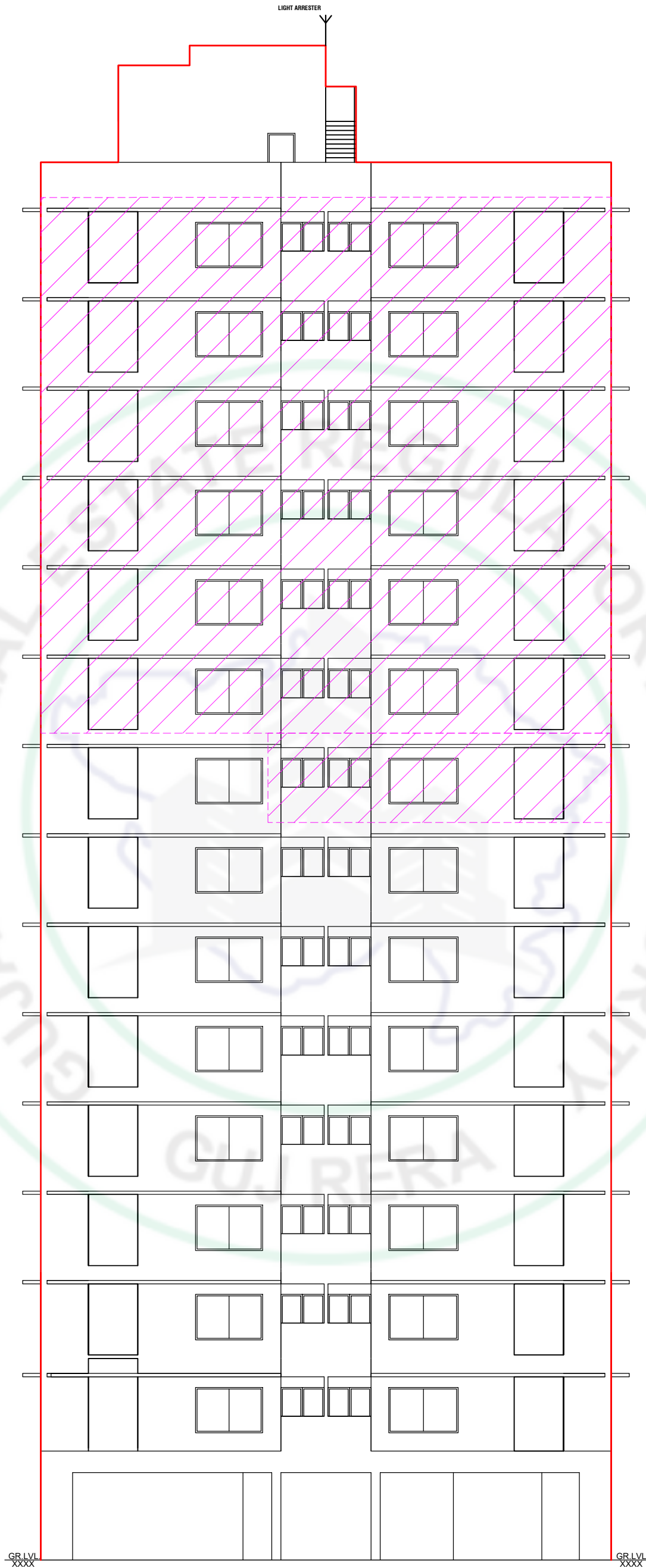




**14TH FLOOR PLAN (BLOCK - E)**



**STAIR CABIN , L.M.R. & OPEN TERRACE PLAN (BLOCK - E)**



**ELEVATION (BLOCK - E)**

# **PROJECT SPECIFICATION**

## **STRUCTURE :-**

R.C.C Framework With Brick/ Cement Block Masonry Wall.

## **WALL FINISH :-**

Internal Smooth Plaster With White Wash. External Sand Faced Plaster With Acrylic Paint.

## **FLOORING :-**

Vitrified Tiles Flooring.

## **DOORS :-**

Wooden Main Door With Wooden Frame And Other Doors Are Flushed Doors.

## **WINDOWS :-**

Fully Glazed Windows With Aluminium Section With Marble Sill.

## **KITCHEN :-** Granite Platform

**TOILET :-** Colored Glazed Tiles Dedo In All Toilets Upto Lintel Level.

**ELECTRIFICATION :-** Concealed Copper Wiring.

# Location



**Structural Engineer :-**  
Solanki Tushar Shashikant

**Architect :-**  
Suresh Pratapji Suthar

**Engineer :-**  
Praful A. Shrimali